



# **SaveCows<sup>®</sup>.com**

**Dedicated** to Animal Well-Being. **Fostering** Hoof Health.



## **COMFORT HOOF CARE Inc.**



## **DAIRYLAND HOOF CARE INSTITUTE INC.**



## **Sure Step Consulting INTERNATIONAL LLC**



## **TRAKRITE<sup>®</sup>** GLOBAL LLC



## **SYNERGY METALWORKS LLC**





# SaveCows<sup>®</sup>.com

Our association of businesses touches all aspects of the hoof health industry ~ trimming, research, training, consulting, manufacturing equipment, trimming supplies, tools and analysis software. With innovative product development and a sincere desire to make a positive impact in the hoof health industry, we focus on offering educational opportunities, quality products, excellent service and a hoof health forum which ultimately allows us to achieve our goal to SAVE COWS<sup>®</sup>.



**COMFORT  
HOOF CARE Inc.**

Providing innovative solutions for the international hoof health industry. Our original design, the Accu-trim<sup>®</sup> Leg Restraint, provides optimum claw position to apply proper hoof trimming techniques. Developing hoof care products that get results such as Accu-bond<sup>®</sup>, Accu-sole<sup>®</sup>, and Accu-bloc<sup>®</sup>. Our Comfort Chutes allow for easy and safe cow handling.



**TRAKRITE<sup>®</sup>**  
GLOBAL LLC

Offering the agriculture industry innovative solutions to flooring challenges commonly found at modern dairy facilities. Our versatile equipment is designed to resurface new or existing concrete, maximizing traction without creating an abrasive surface. Developed and field tested by industry experts who understand dairy cows.



**SYNERGY  
METALWORKS LLC**

Exclusive manufacturer and assembler of Comfort Chutes and TrakRite Global equipment. In addition, we offer production fabrication and assembly services from prototyping ideas in development to build-to-print established products. Currently, working in the agriculture sector, however our flexible workspace allows us to adapt easily to any project.



SCAN ME



# Dedicated to Animal Well-Being Fostering Hoof Health



Hoof care providers, veterinarians, dairy producers and agriculture consultants attend our comprehensive courses which focus on scientifically-based Functional Hoof Trimming. On-site training allows us to work personally with your staff to give them the knowledge to treat hoof problems and improve hoof health through lameness prevention strategies.



Traveling the globe to work with on farm personnel, dairy producers and agri-business consultants developing hoof health solutions and lameness preventative strategies that improve productivity and increase profit margins. We can help you develop an ACTION PLAN by focusing on the dynamics that influence hoof health in your dairy herd.



## **PROMOTE HOOF HEALTH — THE SOLUTION TO ANIMAL WELFARE**

- LEARN about Cutting-Edge Research
- NETWORK with Industry Leaders
- INVEST in Your Dairy Business





# The **RESOURCE** for hoof health equipment and technology



- Featured on all of our Comfort Chutes
- Designed for accurate and precise hoof care
- Optimal and safe trimming position
- Handle cows with ease



Heel to toe view



Easy accessibility



Follows cow's natural leg stroke

# Products You Can Trust



**BOND365<sup>®</sup>**



**Accu-bloc<sup>®</sup>**



**Accu-sole<sup>®</sup>**

**Accu-bond<sup>®</sup>**



# COMFORT CHUTES *H★Series*







- **Hydraulic synchronized controls**  
Convenient and efficient for any technician
- **Ergonomic work area**  
Reduce steps and save time
- **Adjustable for various breeds and ages**  
Cows load with ease
- **Customized electrical system**
- **Model HS - Stationary Chute for on-farm use**
- **Model HT - Chute & Trailer package for portable use**

# COMFORT CHUTES

## A★Series



featuring  
**Accu-trim**  
LEG RESTRAINT

- **All-purpose hoof trimming chute**  
Economical investment for mid-volume trimming situations
- **Safe and easy operation**  
Automated design equipped with features you can trust
- **Electrical systems installed to meet your needs**
- **Model AS - Stationary Chute for on-farm use**
- **Model AT - Chute & Trailer package for portable use**





See <http://www.comforthoofcare.com/comfort-chutes/a-series/> for instructional video.

# COMFORT CHUTES

## M★Series



Model MS chute  
(above)

featuring  
**Accu-trim**  
LEG RESTRAINT

- **Manual safety crank operation**

Practical addition to on-farm hospital areas

- **Easy cow handling**

Accommodates various cattle sizes





Model MR chute (above) is equipped with an 8-inch raised platform.



See <http://comforthoofcare.com/m-series/> for instructional video.



# COMFORT CHUTES

## *E★Series*



Model MRE pictured; MSE available



- **Electric controls featured on M-Series design**  
Remote control operation
- **Trim or treat cows quickly**  
Ideal for veterinary procedures
- **Electrical system customized for your dairy**

# TRAILERS

Both M-Series and E-Series chutes have the option of coming with a trailer for easy transport from farm to farm.





# COMFORT CHUTES *PRO EX★ET*



- Comfortable work environment with minimal setup
- Superior cow flow
- Equipped with Comfort Chute H-Series (shown below)







# Comfort Chute Specifications

	Height	Width	Length	Weight	Minimum Working Area	Unloading Width Clearance	Unloading and Working Height Clearance
--	--------	-------	--------	--------	----------------------	---------------------------	--

<b>COMFORT CHUTES</b> <b>H★Series</b>							
Model HS Chute	7 ft / 2.13 m	5 ft / 1.52 m	11.5 ft / 3.50 m	3,450 lbs / 1,565 kg	9 ft x 12 ft / 3 m x 4 m	N/A	N/A
Model HT Chute and Trailer	7 ft 10 in / 2.38 m	7 ft / 2.13 m	15 ft 6 in / 4.72 m	5,580 lbs / 2,530 kg	10 ft x 12 ft / 3 m x 4 m	8 ft / 2.45 m min.	8 ft 6 in / 2.7 m min.

<b>COMFORT CHUTES</b> <b>A★Series</b>							
Model AS Chute	7 ft / 2.13 m	4.25 ft / 1.3 m	11.5 ft / 3.50 m	2,170 lbs / 984 kg	9 ft x 12 ft / 3 m x 4 m	N/A	N/A
Model AT Chute and Trailer	7 ft 10 in / 2.38 m	7 ft / 2.13 m	10.0 ft / 3.05 m	3,300 lbs / 1,497 kg	10 ft x 12 ft / 3 m x 4 m	8 ft / 2.45 m min.	8 ft 6 in / 2.7 m min.

<b>COMFORT CHUTES</b> <b>E★Series</b>							
Model MSE Chute	6 ft 6 in / 1.98 m	42 in / 1.08 m	8 ft / 2.44 m	1,600 lbs / 727 kg	8 ft x 10 ft / 2.5 m x 3 m	N/A	N/A
Model MSE Chute with Lead-in-Station	7 ft / 2.13 m	42 in / 1.08 m	11 ft / 3.39 m	1,800 lbs / 816 kg	8 ft x 12 ft / 2.5 m x 4 m	N/A	N/A
Model MRE Chute	7 ft 2 in / 2.18 m	42 in / 1.08 m	8 ft / 2.44 m	1,800 lbs / 816 kg	8 ft x 10 ft / 2.5 m x 3 m	N/A	N/A
Model MRE Chute with Lead-in-Station	6 ft 10 in / 2.08 m	42 in / 1.08 m	11 ft 6 in / 3.52 m	2,000 lbs / 907 kg	8 ft x 12 ft / 2.5 m x 4 m	N/A	N/A
E-Series Trailer	7 ft 10 in / 2.38 m	7 ft / 2.13 m	12 ft / 3.66 m	400 lbs / 140 kg	N/A	N/A	N/A

<b>COMFORT CHUTES</b> <b>M★Series</b>							
Model MS Chute	6 ft / 1.83 m	42 in / 1.08 m	8 ft / 2.44 m	1,200 lbs / 546 kg	8 ft x 10 ft / 2.5 m x 3 m	N/A	N/A
Model MS Chute with Lead-in-Station	6 ft 6 in / 2.00 m	42 in / 1.08 m	11 ft / 3.39 m	1,400 lbs / 636 kg	8 ft x 12 ft / 2.5 m x 4 m	N/A	N/A
Model MR Chute	6 ft 8 in / 2.00 m	42 in / 1.08 m	8 ft / 2.44 m	1,400 lbs / 636 kg	8 ft x 10 ft / 2.5 m x 3 m	N/A	N/A
Model MR Chute with Lead-in-Station	6 ft 8 in / 2.00 m	42 in / 1.08 m	11 ft 6 in / 3.52 m	1,600 lbs / 727 kg	8 ft x 12 ft / 2.5 m x 4 m	N/A	N/A
M-Series Trailer	7 ft 10 in / 2.38 m	7 ft / 2.13 m	12 ft / 3.66 m	400 lbs / 140 kg	N/A	N/A	N/A

# Features & Components Comparison

	COMFORT CHUTES <i>H★Series</i>	COMFORT CHUTES <i>A★Series</i>	COMFORT CHUTES <i>E★Series</i>	COMFORT CHUTES <i>M★Series</i>
Equipped with our original Accu-trim® Leg Restraint	YES	YES	YES	YES
May be installed as a stationary chute	YES	YES	YES	YES
May be equipped with wheels for on-farm relocation	YES	YES	YES	YES
May be equipped for transport with our Comfort Chute Trailers	YES	YES	YES	YES
Automatic headgate	YES	YES	YES	YES
Hydraulic headgate	YES			
Pivot style swing tailgate		YES	YES	YES
Hydraulic overhead tailgate	YES			
Belly band to support cattle – manual operation				YES
Belly band to support cattle – electric operation			YES	
Belly band to support cattle – hydraulic operation	YES	YES		
Side gates for loading – manual operation			YES	YES
Side gates for loading – automatic operation		YES		
Side gates for loading – hydraulic operation	YES			
Chute platform raises, adjustable for technician comfort	YES	YES		
Rubber floor for optimal traction	YES	YES	YES	YES
Convenient tool receivers and supply trays	YES	YES	YES	YES
Synchronized controls	YES			
Hydraulic controls	YES	YES		
Electric controls customized to your dairy and country	YES	YES	YES	
Emergency stop controls	YES	YES	YES	N/A
Illuminated work station	YES	YES		
Equipped with lead-in station to improve cow flow	STANDARD	STANDARD	OPTIONAL	OPTIONAL
Accommodates aluminum gates to improve cow flow	YES	YES	YES	YES
Manufactured to accommodate small breeds (Jersey)	YES	YES	YES	YES
Powder coat finish	YES	YES	YES	YES
One year limited warranty	YES	YES	YES	YES
Customer support and replacement parts available	YES	YES	YES	YES
Hoof care training available through Dairyland Hoof Care Institute	YES	YES	YES	YES
Estimated usage level	>3,000 trims annually >1,000 herd size	<3,000 trims annually <1,000 herd size	<1,500 trims annually <500 herd size	<1,200 trims annually <400 herd size



# Block with Confidence



## **BOND365<sup>®</sup>**

**ADHESIVE YOU CAN TRUST ... EVERY DAY**

### **Adheres well – Cures quickly – Less waste**

- Two component, hand mix formulation
- Large serving size – block with confidence
- Easy Uni-bloc application

### **Your Choice**

**B36510      10 application kits**

includes 10 Uni-blocs, 10 Uni-toe cups,  
10 mixing sticks, toe cup holder

**B36540      40 application bulk**

Uni-blocs, Uni-toe cups, mixing sticks and toe cup holder sold separately



To be used exclusively with wood Uni-blocs. Use Accu-bond<sup>®</sup> for plastic blocking solutions.

## BOND365® Instructions

### Step 1



Dispense entire contents of Part A into toe cup.

### Step 2



Dispense entire contents of Part B into toe cup.

### Step 3



Mix the two parts vigorously with mixing stick for 25 seconds. Bond365® will turn opaque in color.

### Step 4



When Bond365® becomes clear, insert block into bottom of toe cup.

### Step 5



Apply thin layer to both block and claw. Spread remaining glue on block to ensure  $3/16"$ – $1/4"$  (5–7 mm) thickness throughout.

### Step 6



Position block on prepared claw. Hold until Bond365® begins to harden. Reposition the block as needed. Allow to cure for four (4) minutes before weight bearing.

\*Attend to lesion during curing time.

Video of application process



# Block with Confidence



## BLOCKING ADHESIVE

- Cures quickly, not brittle
- Stacks well
- Superior adhesion
- No shifting of blocks

### Accu-Bond®

AB200

Case of 20



### Mixing Tips

TP200

Case of 100



## New! *Accu-bond* Blocking Kits

### Accu-Bloc® 10-Application Blocking Kit

Includes 2 Accu-Bond®, 10 mixing tips, 5 Accu-Bloc® 5.0 in (125 mm) / 5 Accu-Bloc® 5.5 in (140 mm)

ABAB

Case of 10



### Accu-Sole® 12-Application Blocking Kit

Includes 2 Accu-Bond®, 12 mixing tips, 12 Accu-Sole® 5.0 in (125 mm) only

ABAS

Case of 12





# Blocking

## Accu-Bloc®



- Therapeutic hoof block – fits medial or lateral claws
- Optimum width creates stability during recovery
- Height allows for sufficient rest of diseased claw
- Superior adhesion with Accu-bond®

<b>ABL50</b>	5 in / 125 mm	Case size: 80
<b>ABL55</b>	5.5 in / 140 mm	Case size: 80

## Accu-Sole®



- Therapeutic sole protects thin claws
- Optimum dimensions so claw maintains flat surface
- Long lasting material achieves results
- Easy, trustworthy application with Accu-bond®

<b>ASLE</b>	5 in / 125 mm	Case size: 200
-------------	---------------	----------------

## Uni-Bloc



- Long-wearing therapeutic wood block
- Fits both lateral and medial claw
- Various sizes, choose the right block for her needs
- Compatible with Bond365® and Accu-bond®

<b>UB110.18</b>	4.5 x 5/8 in / 110 x 18 mm	Case size: 135
<b>UB110.22</b>	4.5 x 7/8 in / 110 x 22 mm	Case size: 105
<b>UB120.18</b>	5.0 x 5/8 in / 120 x 18 mm	Case size: 135
<b>UB120.22</b>	5.0 x 7/8 in / 120 x 22 mm	Case size: 105
<b>UB130.22</b>	5.25 x 7/8 in / 130 x 22 mm	Case size: 105
<b>UB140.22</b>	5.5 x 7/8 in / 140 x 22 mm	Case size: 105

## Uni-Bloc Toe Cup



Adhesive mixing cup used in conjunction with Uni-bloc, the right size and durability for hand-mix glues. Purchase individually or in a case.

<b>UBTC</b>	Case size: 100
-------------	----------------

## Adhesive Warming Bag



- Keep Accu-bond® and Bond365® at ideal temperature
- Achieve optimum block retention

<b>WB50</b>	50Hz Adhesive Warming Bag
<b>WB60</b>	60Hz Adhesive Warming Bag

# Keep her *Moo-ving*

- Adhesive bandage like no UDDER
- LegenDAIRY fabric — even tear — treat cows fast
- MOOvelous price



***Milk it for all it's worth!***

- Stretched: 4" x 5 yds (10 cm x 4.5 m)
- Unstretched: 4" x 2.2 yds (10 cm x 2 m)

<b>MWS</b>	MooWrap Singles
<b>MW18</b>	MooWrap – 18-pk
<b>MW100</b>	MooWrap – 100-pk

# Join ACCU-club ~ Score Surprise Gifts!

- Auto enroll with first US\$500 order of ACCU products
- Get your "Ear Tag" number
- Receive surprise gift with monthly orders
- Qualify for exclusive future promotions
- Spend US\$ 500\* ~ Earn FREE Shipping!

\*Exclusive to ACCU brand products. Domestic and Canadian orders only.

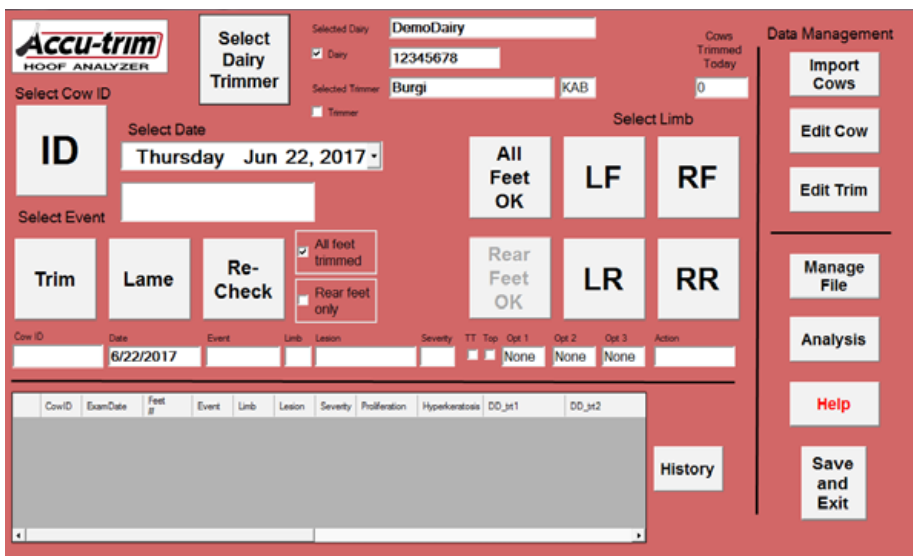
## — ACCU Brand Products —



Uni-bloc

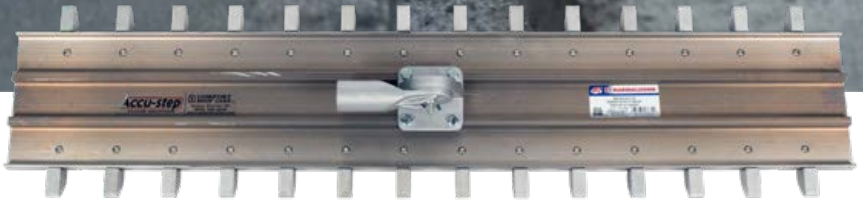
Uni-bloc Toe Cup





ATHA





# **Accu-step®** FLOOR GROOVER

- Create a walking surface cows can trust
- Groove spacing ideal to maximize traction
- Install grooves into wet concrete — do it right from the start
- Groove only in the direction of cow traffic
- 4 ft wide, easy to use

## ASFL



Designed and tested by lameness experts, Dr. Nigel Cook from the University of Wisconsin School of Veterinary Medicine and Karl Burgi, hoof trimmer and hoof health consultant.

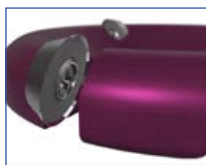


See <http://comforthoofcare.com/accu-step-floor-groover/> for instructional video.

# Tools

## RotoClip Trimming Disc — Round

<b>RD43</b>	3-blade Disc
<b>RD44</b>	4-blade Disc
<b>INRD</b>	10-piece Round Disc Insert Set
<b>RCLG</b>	10-piece Long Disc Screw Set



## RotoClip Trimming Disc — Flat

<b>FL43</b>	3-blade Disc
<b>FL44</b>	4-blade Disc
<b>INFL</b>	10-piece Flat Disc Insert Set
<b>RCSS</b>	10-piece Short Disc Screw Set



## Disc Insert — Round



## Disc Insert — Flat



## Disc Screw — Long



## Disc Screw — Short



## Power Rasp

PS





## Hoof Knives



<b>HK315</b>	#315 Double Edge AESCULAP
<b>HK305</b>	#305 Narrow Edge Left AESCULAP
<b>HK300</b>	#300 Narrow Edge Right AESCULAP
<b>HK321</b>	#321 Wide Edge Left AESCULAP
<b>HK320</b>	#320 Wide Edge Right AESCULAP
<b>RHKR</b>	Therapeutic Edge Right
<b>RHKL</b>	Therapeutic Edge Left

## Knife Sharpening Tools

For video, visit <http://comforthoofcare.com/videos/>.

### Rubber Sharpening Wheel



<b>R606</b>	6-inch diameter
<b>R706</b>	7-inch diameter

### Felt Buffing Wheel

<b>SF</b>	6-inch diameter
-----------	-----------------

### Sharpening Compound

**JCL**



## Hoof Nipper

**N15**



## Sharpvet Hoof Tester

**SVHT**

# Supplies

## New Weave Gauze

G44	Case size: 20
-----	---------------



## Biozide Gel

BI20	Case size: 12
------	---------------



## Quickhit Gel

QHQT	32 ounces
QHGL	1 gallon



## Proworks Gloves

PW6	Case size: 12
-----	---------------





## Acid Resistant Sprayer

ARSR



## Vinyl Trimming Apron

TRA



## Worknit Gloves

WNM	Medium	Case size: 12
WNL	Large	Case size: 12
WNX	Extra Large	Case size: 12



## Cox Dispenser

DS200SL	Side-Load
DS200TL	Top-Load



# The **RESOURCE** for hoof health education



Since 1995, setting the bar for excellence in hoof health education



## Technical Hoof Trimming Course

**Comprehensive five-day course: lectures, lab, farm**

- Learn the scientifically proven Functional Hoof Trimming Method
- Understand the factors that impact hoof health
- Achieve confidence in your trimming skills
- Get results on the farm

## Advanced Hoof Health Course

**Next level for experienced Technical Course grads**

- Assess hoof health through on-farm evaluations
- Network with other trimmers to overcome challenges
- Experience more success on the farm

## Hoof Health Summit — New in 2020!

**Gathering highly experienced technicians**

- Review the latest research
- Obtain a deeper understanding of what factors trigger lameness
- Enhance relationships with your clients and dairy professionals
- Further improve your reputation for getting results

## Consultant Hoof Health Summit

**Meeting the needs of dairy professionals**

- Add to your toolbox — clear, concise hoof health information
- Improve your skill at interpreting and analyzing hoof care records
- Assist your clients in making sound management decisions.
- Collaborate with industry experts

## On-Farm Hoof Care Boot Camp

### Staff training for successful in-house trimming

- Theory and techniques of Functional and Therapeutic Hoof Trimming
- Develop an action plan, prevent lameness and improve animal welfare
- Make hoof health a priority to achieve success
- Initial Training
- Follow up three to six months later
- Annual visits thereafter

Staff Training  
Average Return  
on Investment =  
**US\$0.59**  
per cow, per day



Teaching an **INTEGRATED** approach  
to hoof health



## Hoof Health Evaluation & On-Farm Assessment

**Cows FIRST** — Partnering with dairy management to address hoof health

Our experienced consultants perform an extensive review

- Overall cow environment
- Time budgets and routines
- Handling and stockmanship
- Lameness detection using three-point locomotion scoring system
- Hoof health records and trimming schedules
- Hoof trimming and lame cow treatment
- Footbath management
- Lameness trigger points



We guide you to develop a *No Tolerance for Lameness Policy*  
and game plan focused on cow welfare

[Practical solutions](#) > [Easy implementation](#) > [Instigate change](#) > [Attain success](#)

## Hoof Health & Lameness Prevention Seminars

- Practical, current information for dairy managers, ag professionals and sales teams
- Our knowledgeable consultants will address various hoof health topics
- We prepare you to effectively lead your team. Positively impact the productivity and lives of dairy cows.

[Raise awareness](#) > [Become informed](#) > [Embrace change](#) > [Accomplish goals](#)

# Lameness Economics

## Lameness Cost per Incidence

Death	\$56
Culling	\$96
Lost milk production	\$288
Discarded milk	\$11
Extra days open	\$39
Farm labor	\$7
Treatment	\$30
<b>Total</b>	<b>\$527</b>

\*Guard, 2017

## Lameness is Expensive

### Losses Due to Lameness at \$527 per case

# Cows	100	500	1,000	10,000
<b>5.4% lameness</b>	\$2,846	\$14,229	\$28,458	\$284,580
<b>25% lameness</b>	\$1,3175	\$65,875	\$131,750	\$1,317,500
<b>46% lameness</b>	\$24,242	\$121,210	\$242,420	\$2,424,200
<b>Difference</b>	<b>\$21,396</b>	<b>\$106,981</b>	<b>\$213,962</b>	<b>\$2,139,620</b>

**Improve lameness rates from 46% to 5.4%,  
money in your pocket!**

## Hoof Health Training — Worth the Investment

➡ Develop an Action Plan

➡ Improve Lameness Rates

➡ Increase Profits

### Hoof Health Training: ROI

Farm Size	Investment	Return (at 46% lameness)	Return (at 25% lameness)
<b>100 Cows</b>	\$0.27 per cow, per day	<b>\$0.59</b> per cow per day	<b>\$0.29</b> per cow per day
<b>500 Cows</b>	\$0.05 per cow, per day		
<b>1,000 Cows</b>	\$0.03 per cow, per day		
<b>10,000 Cows</b>	less than \$0.01 per cow, per day		

**Animal Welfare is the Bottom Line!**  
**Prevention must be a top priority**



# The **RESOURCE** for flooring solutions



## TrakRite TR-330

**Developed by dairy industry professionals.**

**Tested by livestock around the world.**

- Designed for efficient operation so you can get the work done.  
Smart engineering — Easy maneuverability — High production
- Patented design allows you to choose the correct drum to do the right job.  
Quick change drum — Follows contour of surface — Precise depth control
- Quality workmanship stands up to the rigors of tough environments.  
Dependable components — Simple to operate — Easy to maintain



TrakRite TR-330 Specifications	
Gas powered 37Hp Kohler engine	
Cutting drum width 12 in / 30.5 cm	
Dust supression system	
Dimensions: 42 in x 72 in x 24 in / 196.7 cm x 180.3 cm x 61 cm	
Weight (without drum): 850 lbs / 356.6 kg	



- Create safe and secure flooring, cows walk without hesitation
- Achieve groove spacing for optimal hoof function, reduce claw trauma
- Add grooves to new concrete or planed surfaces
- Obtain ideal groove pattern, as promoted by the University of Wisconsin-Madison, The Dairyland Initiative



**MAXIMIZE  
TRACTION**

#### Grooves dimensions

Width	.75 in	1.9 cm
Depth	.50 in	1.3 cm
Spacing	3.25 in on center	8.3 cm on center

#### Specifications

Production per hour	500–800 sq ft*	46.5–74.3 sq m*
Production per assembly	25,000–40,000 sq ft*	2,322.6–3,716.1 sq m*
Weight	122 lbs / 55.3 kg	

\*Based on blade #TC10187/15.40



- Cows walk confidently on secure, safe flooring
- Regain traction of slippery and smooth concrete caused by repetitive scraping
- Maintain the integrity of the flat surface
- Ideal solution for various flooring conditions and locations

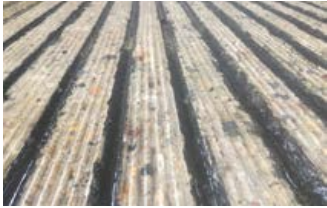


**MINIMIZE  
LAMENESS**

#### Specifications

Production per hour*	800–1,200 sq ft	74.3–111.4 sq m
Production per assembly*	40,000–55,000 sq ft	3,716.1–5,109.7 sq m
Weight	107 lbs	48.5 kg

\*Based on blade #TC10250/15.40



- Create a completely flat and stable flooring surface
- Remove concrete on all uneven flooring conditions
- Level exposed aggregate
- Prep floors for Mini Groove® or Deep Groove® cutting
- Achieve results efficiently
- Economical for commercial use

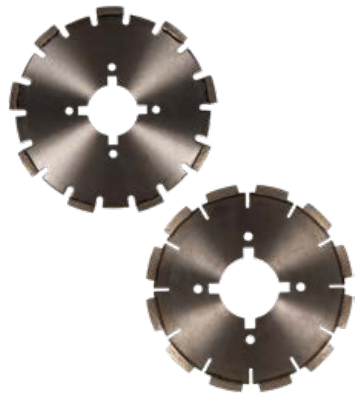
#### Specifications

Production per hour	1,200 – 2,000 sq ft*	111.4 – 185.8 sq m*
Production per assembly	40,000 – 80,000 sq ft*	3,716.1 – 7,432.2 sq m*
Weight	148 lbs	67.1 kg

\*Based on blade #TC10250/15.40

## Drum Accessories

<b>Blade</b>	TC10187/15.40A	10 in / 25.4 cm
<b>Blade</b>	TC10187/15.40B	10 in / 25.4 cm
<b>Blade</b>	TC10250/15.40A	10 in / 25.4 cm
<b>Blade</b>	TC10250/15.40 B	10 in / 25.4 cm
<b>Blade</b>	TC11250/13.40AB	11 in / 27.9 cm
<b>Blade</b>	TW10250	10 in / 25.4 cm
<b>Spacer</b>	GRSP12	12 ga / 0.32 cm
<b>Spacer</b>	GRSP25	0.25 in / 0.64 cm
<b>Threaded Rod</b>	TR25-G9003	10 mm



## **SUCCESS STORY:** UNITED DREAMS DAIRY, NORTH FREEDOM, WISCONSIN

- ✓ Recent expansion from 375 to 700 cows
- ✓ Built new, 10-row cross-vent barn with virgin sand bedding
- ✓ Implemented Deep Groove® with TR-330
- ✓ Cows moved in March 2018

Longer walking distance ▶ Larger pen size ▶ 0% incidence of thin soles



Since putting up the new barn, cows walk confidently to and from the parlor. We are extremely pleased with the results the Deep Groove® finish has given us.

~ Michael Niemann  
Partner  
United Dreams Dairy

## **PONCHO SHOWERS**

Through his work as operations manager, Poncho Showers oversees product development and production and assists customers to find the right solutions to their concrete flooring needs. His passion for helping people who are responsible for the well-being of dairy cows is what drives Poncho to continually strive to raise the industry bar.



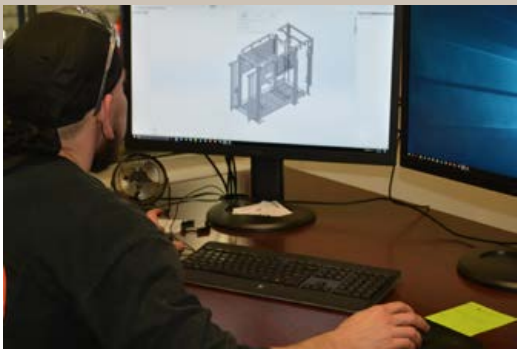
**Let us help you achieve your flooring goals.  
Contact us for training and consulting services.**



# The **RESOURCE** for manufacturing services



## From Design to Manufacturing to Delivery



### Design

Combining your ideas with our expertise, we guide you through design and development. New or advanced, unique or simple, your vision can become a reality.



### Manufacturing

Precision, quality and efficiency are the hallmarks of our processes. We ensure projects are completed timely, accurately and in the most cost-effective manner possible.

## Coating services

Your fabricated designs deserve a top quality, durable finish that will stand the test of time.



## Assembly

Products are assembled, tested and inspected to your high standards. From choosing components to prepping for international installations, we implement safeguards for end users.



## Distribution – Exporting

Bringing decades of domestic shipping and international exporting experience, we package your goods, assist with required documentation and arrange transport for an on-time delivery.



## **SAVE COWS** symposium



In today's fast-paced agri-business environment, everyone requires the most up-to-date information about hoof health and lameness issues. Our goal is to communicate ideas and share new research within the international dairy industry. Visit [SaveCows.com/Symposium](http://SaveCows.com/Symposium) for more information.

**LEARN** about Cutting-Edge Research

**NETWORK** with Industry Leaders

**INVEST** in Your Dairy Business



## Industry Partners

Provides training in proper livestock handling, creating a safe and efficient environment for people working with livestock. Furthermore, proper livestock handling significantly benefits productivity — increasing milk production, improving conception rates and decreasing incidences of lameness.

<https://www.steprightstockmanship.com/>



Through this flooring resurfacing service business, flooring issues are assessed, then a variety of grooving techniques and patterns are applied to solve walking surface challenges. The reconditioned flooring prevents lameness and reduces injuries, resulting in more productive cattle.

<http://www.trakriteusa.com/>



A national web-based resource that provides educational material, networking, virtual tours, contacts and tools to ensure dairy producers have access to necessary information required to construct welfare-friendly facilities for their livestock.

<https://thedairylandinitiative.vetmed.wisc.edu/>



A pioneer in advancing animal and human health through research and collaboration.

<https://www.vetmed.wisc.edu/>





# The Save Cows® Team



**Karl Burgi, Founder and Board Chairman**

KBurgi @SaveCows.com

*As caretakers of dairy cattle, I believe we must do everything in our power to implement best-known management practices. Hoof health is literally the foundation of animal well-being which translates into high quality products available to consumers around the globe. It is through my collaboration with dairy industry professionals and international researchers that I offer practical solutions to the dairy management team. Each day when I arrive at a dairy, I strive to make a difference. My personal passion and business mission is to Save Cows®.*



**Melanie Burgi, Chief Executive Officer**

MBurgi @SaveCows.com

*Growing up on a Brown Swiss dairy farm in the hills of Wisconsin, I learned first-hand the importance of raising healthy calves and keeping cows productive. Through our company's work, we create a ripple of information and technology that empowers people who are directly responsible for the health of dairy cattle. This results in quality food placed in school cafeterias, at restaurants and on family tables.*



**Kimberly Evert, Director of Business Development**  
KEvert @SaveCows.com

*In the spirit of supporting our business mission to Save Cows®, I have the unique opportunity to promote hoof health and animal well-being on a global scale. Our international network allows us to enhance the life and productivity of dairy cows by making education and technology available to producers in over 75 countries. Every day I look forward to collaborating with the industry's best, helping them achieve their hoof health goals and, in turn, continually raising the hoof care standard of excellence.*



**Travis Busman, Hoof Health Consultant, Program Director**  
TBusman @SaveCows.com

*I believe as the dairy industry has evolved, we are required to be vigilant in identifying the needs of dairy cattle. Nothing about a dairy cow matters in the absence of mobility. Hoof health must be at the front line of the fight for animal well-being. With every opportunity I'm afforded, my goal is to raise the standard of hoof care, hoof health education and stewardship. I'm proud to be part of the Save Cows® team, where we embrace the responsibility to support the future of dairying with field-proven products and hoof care techniques.*



**SaveCows.com**

**Dedicated to Animal Well-Being. Fostering Hoof Health.**

420 Commerce Avenue  
Baraboo, Wisconsin 53913  
U.S.A.

Tel: 608.356.3834  
888.384.3834  
Fax: 608.356.6112  
Text: 608.477.9811

**We look forward to helping you achieve  
your hoof health goals.**

